

**Finishing Paints
Indoors & Outdoors**







SEALING PRIMER

Primer for light-coloured,
opaque paints & lacquers

as of [page 7](#)



FINISHING PAINT

Highly opaque & elastic
weather protection paint

as of [page 11](#)



ALL PRIMER

Adhesive primer for difficult substrates

as of [page 17](#)



COLOR VARNISH 2 IN 1

Primer and high gloss varnish in one

as of [page 21](#)



The natural Enemies of Wood

UV-Rays

The sun takes its toll on wood surfaces, not just through its heat but also through its ultraviolet rays which penetrate into the wood. When combined with precipitation, this effect can change the colour of unprotected wood in just a few weeks to months, turning the wood a silver grey colour. Fine wood fibres loosen and stand upright on the surface which cause a loss in strength. Most of the undesired changes in the colour and texture of the surface can be prevented by using pigmented coatings. With opaque, pigmented coating systems, you are on the safe side! These coating systems provide the best possible protection against UV-rays.

Blue Stain & Soft Rot

Blue stain is a type of fungi that causes visible, blue-black stains on wood. Blue stain does not cause the wood to decay but is very unsightly and it also opens the door for other fungi (soft rot) because it perforates the cell walls which allows the wood to absorb more water (capillarity).

Soft rot is the most dangerous type of fungi because it damages the structure of wood. The stability of the wood

is lost and the wood degrades. Even wood that is treated with an opaque coating system is not protected from this type of fungus. When less resistant softwood is used in outdoor areas, impregnation with Remmers Wood Preservative Primer is recommended.

Moisture

Wood in outdoor areas is continuously subjected to the influence of moisture: rain, dew, condensation, etc. which cause the content of moisture to rise. Moisture content sinks again through evaporation. This process causes cracks to form on the surface. Moisture that enters the wood through this process or through diffusion must be able to leave the wood again. Otherwise the wood remains wet beneath the surface – creating a nutrient medium for blue stain and other fungi that degrade wood. In the case of building elements that are not dimensionally stable, e.g. wood siding or fences, the penetration of moisture through end grain wood or cracks cannot be entirely prevented. That is why it is important to use coatings that are diffusion-open (e.g. Remmers Finishing Paint) so that the wood can “breathe” and moisture can leave the wood again.



SEALING PRIMER



Primer for light-coloured finishing paints & lacquers

- To prevent yellowish stains
- Dries quickly
- Water based
- Highly opaque/matt



Size of container	Area that can be coated once
0.75 l	approx. 10 m ²
2.5 l	approx. 33 m ²
5.0 l	approx. 67 m ²



Range of Use

Water based, special coating that prevents water soluble substances in wood from bleeding.

- Old coatings (load-bearing)
- Balcony railings
- Carports
- Roof eaves
- Ceiling panels
- Facade facing
- Windows/window shutters
- Arbours
- Palisades/pergolas
- Screen walls
- Doors
- Wall panels
- Fences



Application rate:

- As a primer: 2 x 70–80 ml/m²
- As a finish: 3 x 70–80 ml/m²

Tips & important notes:

Sealing Primer does not replace a wood preservative impregnation! If the species of wood is not sufficiently resistant (especially softwood), additional impregnation with Remmers Wood Preservative Primer is recommended before Sealing Primer is applied.

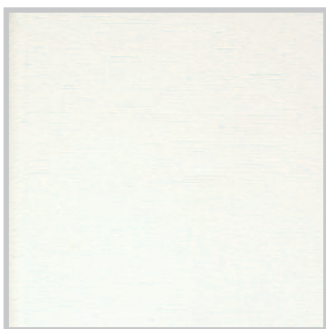
Notes on working:

- The best possible sealing effect is achieved if Sealing Primer is applied in two thin coats with a drying time of at least 4 hours between coats.
- The first coat binds water soluble substances in the wood. The second coat effectively seals off these substances.

A direct comparison shows clearly



WITHOUT Sealing Primer, the surface yellows.



WITH Sealing Primer the surface remains bright white

Shades of colours



white





FINISHING PAINT



Highly opaque & elastic weather protection paint

- For wood, render & masonry work
- For zinc sheet & fibrated cement
- Extremely weather resistant
- Driving rain tight
- Dries quickly
- Water based
- Opaque/silk matt



Size of container	Area that can be coated once
0.75 l	approx. 7,5 m ²
2.5 l	approx. 25 m ²
5.0 l	approx. 50 m ²



Range of Use

- Old coatings (load-bearing)
- Balcony railings
- Carports
- Roof eaves
- Ceiling panels
- Facade facings
- Window shutters
- Arbours
- Palisades / pergolas
- Screen walls
- Wall panels
- Fences
- Zinc
- Zinc sheet metal
- Galvanised steel



Application rate:

- 2 x 100 ml/m²
- If pre-treated with Sealing Primer
(for light shades of colours): 1 x 100 ml/m²

Tips & important information:

Always treat with Sealing Primer first when using white or other light shades of colours to prevent water soluble substances from bleeding through the coating. This keeps the coating bright white/light.

Notes on working:

- The coating can be applied by brush, roller or spraying. In case of highly absorbent substrates, dilute the first coat with 10 % water. Always close containers tightly after use and store cool and dry.

Shades of colours



white



light ivory
RAL 1015



gold-yellow



corn yellow



Swedish red



red-brown



*nut brown**
RAL 8011



tobacco brown



bottle green



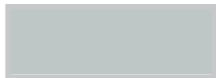
*moss green**
RAL 6005



royal blue



Frisian blue



light grey



dark grey



black



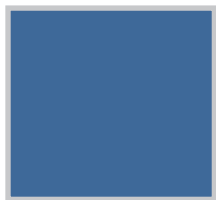
Special colours are available on request

* *Remmers house colours*

Suggestions for Attractive Mixed Colours

There is no limit to your creativity. The mixed shades of colours shown here can be easily produced by simply mixing whole cans. No measuring, weighing, etc. necessary. Just pour the contents of the two colours into a sufficiently large container and stir the paint thoroughly.

These printed colours may deviate from the original colour of the paint.



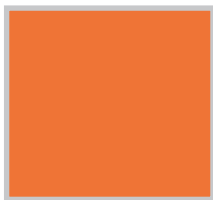
Enzian

*Frisian blue +
royal blue (1:1)*



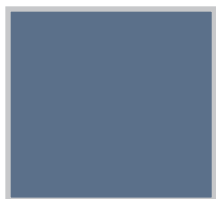
Oregano

*royal blue +
moss green (1:1)*



Tangerine

*Swedish red (0.75 l)
+ gold-yellow (5 l)*



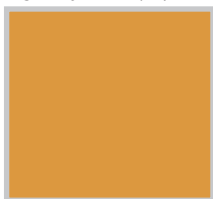
Arctic blue

*dark grey +
Frisian blue (1:1)*



Summer green

*bottle green (0.75 l) +
gold-yellow (2.5 l)*



Curry

*corn yellow +
gold-yellow(1:1)*



Pacific blue

*royal blue (0.75 l) +
white (5 l)*



Mint

*white (2.5 l) +
bottle green (0.75 l)*



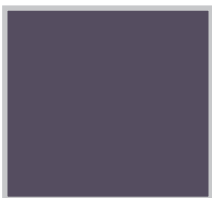
Caribbean yellow

*white +
gold-yellow (1:1)*



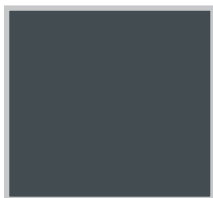
Chilli

Swedish red +
red-brown (1:1)



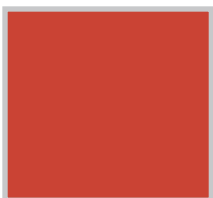
Aubergine

Frisian blue +
Swedish red (1:1)



Date

white (0.75 l) +
black (2.5 l)



Blood red

gold-yellow +
Swedish red (1:1)



Artichoke

white (5 l) +
red-brown (2.5 l)



Champagne

light ivory (0.75 l) +
white (5 l)



Corn poppy

white (0.75 l) +
Swedish red (5 l)



Mushroom

nut brown (0.75 l) +
white (5 l)



Pink

white (2.5 l) +
Swedish red (0.75 l)



ALL PRIMER



Adhesive primer for difficult substrates

- Prevents yellowish stains
- Dries quickly
- For metals, PVC and wood
- Provides protection against rust
- Seals off substances in wood
- Water based
- Opaque



Size of containers	Area that can be coated once
0.75 l	approx. 8 m ²
2.5 l	approx. 28 m ²

Aluminium



PVC



Metal



Wood



Range of Use

For use as an adhesion promoting primer on difficult substrates – with the exception of anodised aluminium and freshly galvanised steel.

- Aluminium (pure)
- Old coatings (load bearing)
- Wood constructions
- Copper
- Brass
- PVC (rigid)
- Steel
- Zinc
- Zinc sheet metal
- Galvanised steel



Application rate:

- 80–100 ml/m² depending on layer thickness

Tips & important information:

Surfaces primed with All Primer can be finished with many Remmers products, e.g. Compact Varnish PU, Color Varnish 2 in 1, UV Opaque Top, Finishing Paint and Rofalin Acrylic, etc.

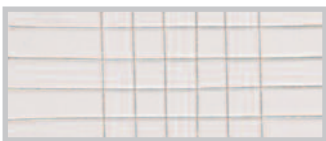
Notes on working:

- The substrate must be free of grease, soot, dirt, dust, corrosion and substances that could interfere with adhesion as well as old coatings that do not adhere.
- Thorough preparation of the substrate is essential for good adhesion of the coating system.

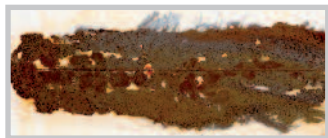
A direct comparison shows clearly



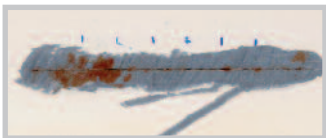
WITHOUT All Primer: The varnish detaches



WITH All Primer: Good adhesion



WITHOUT All Primer: No rust protection



WITH All Primer: Good rust protection



WITHOUT All Primer: Water soluble substances bleed through



WITH All Primer: No stains

Shades of colours



white



red brown



grey





COLOR VARNISH 2 IN 1



Primer and high gloss varnish in one product

- Prevents yellowish stains
- Can be applied directly on rust
- For wood substrates
- Also for radiators
- Impact & scratch resistant
- Protects against rust
- Solvent based
- Opaque/high gloss



Size of containers	Area that can be coated once
0.375 l	approx. 4,5 m ²
0.75 l	approx. 9,5 m ²
2.5 l	approx. 28 m ²



Range of Use

Color Varnish 2 in 1 is especially suitable for treating blank or rusted ferrous metals in indoor and outdoor areas as well as wood surfaces that have been primed or have a tightly adhering old coating.

- Old coatings (load bearing)
- Ferrous metals (slightly rusted)
- Windows
- Garden furniture
- Radiators
- Wood constructions
- Steel
- Doors



Application rate:

- 80 ml/m² depending on layer thickness

Tips & important information:

Color Varnish 2 in 1 can be applied with a brush, roller or sprayed. When used as a rust protection coating, at least two coats of Color Varnish 2 in 1 must be applied.

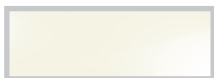
Notes on working:

- Apply Color Varnish 2 in 1 in thin coats. If higher application rates are used, drying time may be considerably delayed.
- For good coating results, the substrate must be clean, dry and free of grease and salt.

Shades of colours



pure white
RAL 9010



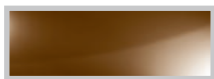
cream white
RAL 9001



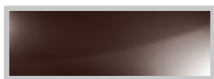
rape seed yellow
RAL 1021



fire red
RAL 3000



nut brown
RAL 8011



chocolate brown
RAL 8017



moss green
RAL 6005



leaf green
RAL 6002



enzian blue
RAL 5010



light grey
RAL 7035



white aluminium
RAL 9006



silver grey
RAL 7001



deep black
RAL 9005



Special colours available upon request

**Remmers (UK) Limited Crawley
United Kingdom**

Tel.: +44(0) 845 373 0103

Fax: +44(0) 845 373 0104

www.remmers.co.uk

**Remmers India Pvt. Ltd.
Gurgaon**

Tel.: +91 124 400 9131

Fax: +91 124 400 9134

www.remmers.in



846 / 01.12 GB